

# PLAYBILL®

MARQUIS THEATRE



*The Jimmy*™

The **National** High School  
**Musical Theater Awards**

© The Al Hirschfeld Foundation.



# NATIONAL ENDOWMENT FOR THE ARTS

---

The National Endowment for the Arts is a public agency dedicated to supporting excellence in the arts, both new and established; bringing the arts to all Americans; and providing leadership in arts education. Established by Congress in 1965 as an independent agency of the federal government, the Endowment is the nation's largest annual funder of the arts, bringing great art to all 50 states, including rural areas, inner cities, and military bases.

June 28, 2010

NHS MUSICAL THEATER AWARDS, LLC

Van Kaplan James L. Nederlander Nick Scandalios Susan Lee Joseph C. Guyaux

Present

THE  
**2010 JIMMY AWARDS**  
FOR EXCELLENCE IN  
HIGH SCHOOL MUSICAL THEATER

*Honoring James M. Nederlander*

Sponsored by

Pittsburgh CLO

Nederlander  
Alliances, LLC

Host

Kathie Lee Gifford

Video Design

SenovA, Inc.

Lighting Designer

Andrew D. Ostrowski

Sound Designer

Christopher M. Evans

Sound

Sound Associates

Technical Director

John R. Edkins

Documentary Filming

Wrecking Crew Media

Project Stage Manager

Alix Claps

Writer & Editor

Mary Jane Brennan

Press Representatives

The Hartman Group

Development

Wynne Fedele

Company Management

Camp Broadway, LLC

General Management

Arianna Knapp  
SenovA, Inc.

Executive Director

Susan Lee

Music Director and Arranger

Michael Moricz

Choreographed by

Kiesha Lalama-White

Produced & Directed by

Van Kaplan



*Dear Dad...*

*We love you  
and are so proud  
of you!*

*Jimmy  
and  
Margo*

# Celebrating Jimmy Nederlander



James M. Nederlander, or "Jimmy" as he is known on Broadway, is the Chairman of the Nederlander Producing Company of America Inc., the owner/operator of a vast chain of theatres, and a producer of distinguished entertainment for over 70 years. He has produced over 100 Broadway musicals and plays including *Annie*, *Applause*, *Copenhagen*, *The Will Rogers Follies*, *Les Liaisons Dangereuses*, *Me and My Girl*, *La Cage aux Folles*, *Nine*, *Noises Off*, *Lena Horne: The Lady and her Music*, *Benefactors*, *Woman of the Year* and *The Life and Adventures of Nicholas Nickleby*, for which he has won 11 Tony® Awards and dozens of other honors. Throughout his career, he has also presented operas, ballets, concerts, and

artists ranging from Nureyev to Sinatra to Billy Joel to U2. His Broadway theatres include the Brooks Atkinson (*Rock of Ages*), Gershwin (*Wicked*), Lunt-Fontanne (*The Addams Family*), Marquis (*Come Fly Away*), Minskoff (*Disney's The Lion King*), Nederlander (*Million Dollar Quartet*), Neil Simon (*Rain*), the world famous Palace (*West Side Story*), and Richard Rodgers (*In The Heights*). Jimmy and his son, James L. Nederlander, also present Broadway shows in Chicago, Los Angeles, San Diego, Riverside, San Jose, Tucson, Durham and London. The Broadway League recently presented Jimmy with the Schoenfeld Vision for Arts Education Award for establishing The National High School Musical Theater Awards.

Boss...Mentor...Friend  
Thank you for everything.  
Love, Nick

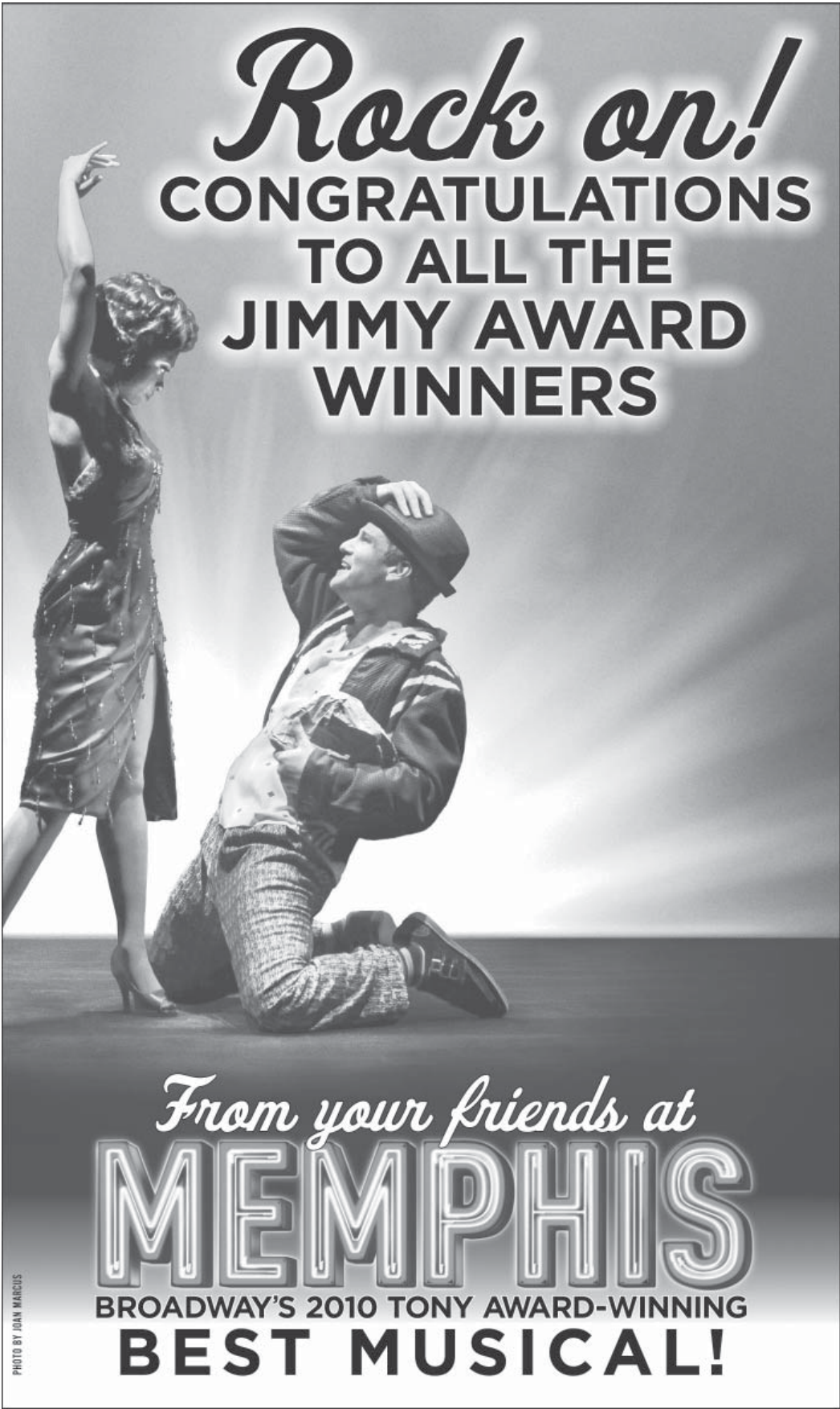


sound associates, inc.

Congratulations To All Participants!

yonkers • new york • atlanta

[www.soundassociates.com](http://www.soundassociates.com)



*Rock on!*  
**CONGRATULATIONS  
TO ALL THE  
JIMMY AWARD  
WINNERS**

*From your friends at*  
**MEMPHIS**  
BROADWAY'S 2010 TONY AWARD-WINNING  
**BEST MUSICAL!**

PHOTO BY JOAN MARCUS

# ACT I

**Opening Number** ..... Full Cast  
Broadway Medley

**Host** .....Kathie Lee Gifford

## Welcome

NHSMTA President & NHSMTA Executive Director .....Van Kaplan & Susan Lee

## James M. Nederlander Tribute Video

### Actress Medley

Claire Gerig	Alexandria Payne	Alexis Tarver	Angeline Lonardi
Katie Finan	Mandy Buehler	Elise Vannerson	Katherine Dela Cruz
Chelsea Reed	Emily Rowan	Sarah Schultz	

### Actor Medley

Dino Nicandros	Matt Hill	Christian Paris	Arsalan Akhavan
Elgin Giles	Jordan Bunshaft	Zack Zumbek	Alex Field
Bryan Galvan	John Jorge	Gavin McClelland	

### Actress Medley

Sarah Bergeson	Katrina Kiss	Molly Franco	Mary DiGangi
Katie Oxman	Stephanie Styles	Kathryn Faughnan	Marissa Bland
Andrea Weinzierl	Haley Kurr	Katie Sapper	

### Actor Medley

Benjamin Jones	Jordan Swinkunas	Adam Glickman	Josh Skurnik
Cooper Rowe	Christopher Cook	Kyle Selig	Prentiss Mouton
Andrew Gallop	Rob Gerold	Nathaniel Irvin	

*Intermission*

# ACT II

## Participating Programs Video

**Announcement of Finalists** .....Kathie Lee Gifford

**Special Presentation** ..... Tommy Tune

**Solo Performances** ..... Finalists

**Event Highlights Presentation** .....Kathie Lee Gifford

**Come Fly Away Tribute** .....Laura Mead & Ron Todorowski & Full Cast

**Awards Presentation**..... Van Kaplan & James L. Nederlander

**Closing Remarks** .....Kathie Lee Gifford

**Finale** ..... Full Cast

# The **National** High School **Musical Theater Awards**

The National High School Musical Theater Awards is a national celebration of outstanding student achievement recognizing individual artistry in vocal, dance and acting performance by high school students. The program aims to create a pathway connecting promising young performers to the professional theater industry. *The Jimmy™* is named for legendary Broadway theater owner and producer James M. Nederlander.

Timely and far-reaching, the National High School Musical Theater Awards is the culmination of awards programs across the country presented by dozens of professional theater organizations. This year, more than 1,000 schools are represented by our talented participants, each of whom was honored as Best Actress or Best Actor at a regional competition. Prior to tonight's "Broadway debut," participants experienced five days of private coaching, master classes and rehearsals with theater professionals in New York. Their week's journey concludes with a panel of industry experts selecting exceptional students for *The Jimmy™* for Best Performance by an Actress or Actor. Students will also receive opportunities for merit scholarships, professional advancement and other prizes.

The National High School Musical Theater Awards was established in 2009 to help invigorate and support in-school theatre arts programs. The program has already been recognized by The National Endowment for the Arts, The Broadway League, The Shubert Organization and other industry organizations and foundations committed to nurturing future artists and audiences.

## 2010 Jimmy Award Judges

Scott Ellis                      Kent Gash                      Montego Glover                      Rachel Hoffman  
Alecia Parker                      Nick Scandalios                      Bernie Telsey

### Judicial Administrator

Dr. Christopher Rawson, Chair, American Theatre Critics Association

## Participating Award Programs

BETTY LYNN BUCKLEY AWARDS Casa Mañana Theatre	GLOBE HONORS The Old Globe	NORTH CAROLINA THEATRE CAPITAL AWARDS North Carolina Theatre
BLUE STAR AWARDS Kansas City Starlight Theatre	HERSHEY THEATRE APOLLO AWARDS Hershey Theatre	RISING STAR AWARDS Paper Mill Playhouse
BROADWAY STAR OF THE FUTURE AWARDS David A. Straz, Jr. Center for the Performing Arts	HIGH SCHOOL MUSICAL THEATRE AWARDS The Orpheum Theatre	SHULER HENSLEY AWARDS FOR EXCELLENCE Cobb Energy Performing Arts Centre Foundation
THE CONNECTICUT HIGH SCHOOL MUSIC THEATER AWARDS The Spirit of Broadway Theater	THE JESTER AWARDS Music Theatre of Wichita	SPOTLIGHT MUSICAL THEATRE PROGRAM Hennepin Theatre Trust
EXCELLENCE AWARDS Charlotte Performing Arts Center	JOHN RAITT AWARD FOR YOUTH FCLO Music Theatre	THE STAGE'S TOP HONOR AWARDS Broadway San Jose
FOOTLIGHTERS SCHOLARSHIP AWARDS Musical Theatre West	MACY AWARDS McCoy Rigby Entertainment	STARS OF TOMORROW Rochester Broadway Theatre League
THE FREDDY AWARDS State Theatre Center for the Arts	METROPOLITAN HIGH SCHOOL THEATRE AWARDS Helen Hayes Youth Theatre/ Town Square Productions, Inc.	TOMMY TUNE AWARDS Theatre Under The Stars
GENE KELLY AWARDS Pittsburgh CLO		



# 2010 Jimmy Award Nominees



**ARSALAN AKHAVAN**  
FAGIN, *OLIVER!*  
SHULER HENSLEY AWARDS  
FOR EXCELLENCE  
ATLANTA, GA  
ATLANTA INTERNATIONAL SCHOOL



**SARAH BERGESON**  
NARRATOR, *JOSEPH AND THE  
AMAZING TECHNICOLOR  
DREAMCOAT*  
BLUE STAR AWARDS  
KANSAS CITY, MO  
BLUE VALLEY HIGH SCHOOL



**MARISSA BLAND**  
ROSE ALVAREZ, *BYE BYE BIRDIE*  
STARS OF TOMORROW AWARDS  
ROCHESTER, NY  
CHURCHVILLE-CHILI SENIOR  
HIGH SCHOOL



**MANDY BUEHLER**  
*THE WITCH, INTO THE WOODS*  
EXCELLENCE AWARDS  
CHARLOTTE, MI  
HASTINGS HIGH SCHOOL



**JORDAN BUNSHAFT**  
HORACE VANDERGELDER,  
*HELLO, DOLLY!*  
GLOBE HONORS  
SAN DIEGO, CA  
CORONADO SCHOOL OF THE ARTS



**CHRISTOPHER COOK**  
TYRONE JACKSON, *FAME*  
HERSHEY THEATRE APOLLO AWARDS  
HERSHEY, PA  
SUSQUEHANNA TOWNSHIP  
HIGH SCHOOL



**KATHERINE DELA CRUZ**  
*AIDA, AIDA*  
THE STAGE'S TOP HONOR AWARDS  
SAN JOSE, CA  
IRVINGTON HIGH SCHOOL



**MARY DIGANGI**  
ROSE, *GYPSY*  
RISING STAR AWARDS  
MILLBURN, NJ  
HOWELL HIGH SCHOOL



**KATHRYN FAUGHNAN**  
PRINCESS WINNIFRED,  
*ONCE UPON A MATTRESS*  
METROPOLITAN HIGH SCHOOL  
THEATRE AWARDS  
NEW CITY, NY  
PLEASANTVILLE HIGH SCHOOL



**ALEX FIELD**  
TINMAN, *THE WIZ*  
GENE KELLY AWARDS  
PITTSBURGH, PA  
CENTRAL CATHOLIC  
HIGH SCHOOL



**KATIE FINAN**  
MISS SHERMAN, *FAME*  
NORTH CAROLINA THEATRE  
CAPITAL AWARDS  
RALEIGH, NC  
GREEN HOPE HIGH SCHOOL



**MOLLY FRANCO**  
PETER PAN, *PETER PAN*  
BETTY LYNN BUCKLEY AWARDS  
FT. WORTH, TX  
KELLER HIGH SCHOOL



**ANDREW GALLOP**  
CAPTAIN HOOK, *PETER PAN*  
BETTY LYNN BUCKLEY AWARDS  
FT. WORTH, TX  
KELLER HIGH SCHOOL



**BRYAN GALVAN**  
*BEAST, BEAUTY AND THE BEAST*  
MACY AWARDS  
YORBA LINDA, CA  
VALLEY HIGH SCHOOL



**CLAIRE GERIG**  
EVE, *CHILDREN OF EDEN*  
THE JESTER AWARDS  
WICHITA, KS  
MAIZE HIGH SCHOOL



**ROB GEROLD**  
HENRY JEKYLL / EDWARD HYDE,  
*JEKYLL AND HYDE*  
THE FREDDY AWARDS  
EASTON, PA  
NORTH WARREN REGIONAL  
HIGH SCHOOL

*Congratulations  
to all of tonight's  
NEW STARS!*



The Shubert Organization

Philip J. Smith  
Chairman

Robert E. Wankel  
President

*THE BEST IS  
YET TO COME...*

# 2010 Jimmy Award Nominees



**ELGIN GILES**  
 SKY MASTERSON, *GUYS AND DOLLS*  
 NORTH CAROLINA THEATRE CAPITAL AWARDS  
 RALEIGH, NC  
 WEST JOHNSTON HIGH SCHOOL



**ADAM GLICKMAN**  
 SWEENEY TODD, *SWEENEY TODD*  
 BROADWAY STAR OF THE FUTURE AWARDS  
 TAMPA, FL  
 AMERICAN HERITAGE SCHOOL



**MATT HILL**  
 FREDDY BENSON, *DIRTY ROTTEN SCOUNDRELS*  
 THE STAGE'S TOP HONOR AWARDS  
 SAN JOSE, CA  
 ARCHBISHOP MITTY HIGH SCHOOL



**NATHANIEL IRVIN**  
 CHAUVELIN, *THE SCARLET PIMPERNEL*  
 SPOTLIGHT MUSICAL THEATRE PROGRAM  
 MINNEAPOLIS, MN  
 MINNETONKA HIGH SCHOOL



**BENJAMIN JONES**  
 LEADING PLAYER, *PIPPIN*  
 BLUE STAR AWARDS  
 KANSAS CITY, MO  
 RAYMORE-PECULIAR HIGH SCHOOL



**JOHN JORGE**  
 JEAN VALJEAN, *LES MISÉRABLES*  
 THE CONNECTICUT HIGH SCHOOL MUSIC THEATRE AWARDS  
 NORWICH, CT  
 AMITY HIGH SCHOOL



**KATRINA KISS**  
 JOHANNA, *SWEENEY TODD*  
 BROADWAY STAR OF THE FUTURE AWARDS  
 TAMPA, FL  
 AMERICAN HERITAGE SCHOOL



**HALEY KURR**  
 NELLIE FORBUSH, *SOUTH PACIFIC*  
 SPOTLIGHT MUSICAL THEATRE PROGRAM  
 MINNEAPOLIS, MN  
 WAYZATA HIGH SCHOOL



**ANGELINE LONARDI**  
 BELLE, *BEAUTY AND THE BEAST*  
 HERSHEY THEATRE APOLLO AWARDS  
 HERSHEY, PA  
 BISHOP MCDEVITT HIGH SCHOOL



**GAVIN MCCLELLAND**  
 JEAN VALJEAN, *LES MISÉRABLES*  
 STARS OF TOMORROW AWARDS  
 ROCHESTER, NY  
 MYNDERSE ACADEMY



**PRENTISS MOUTON**  
 REVEREND SHAW, *FOOTLOOSE*  
 HIGH SCHOOL MUSICAL THEATRE AWARDS  
 MEMPHIS, TN  
 RIDGEWAY HIGH SCHOOL



**DINO NICANDROS**  
 JULIAN MARSH, *42ND STREET*  
 TOMMY TUNE AWARDS  
 HOUSTON, TX  
 MEMORIAL HIGH SCHOOL



**KATIE OXMAN**  
 THE CHAIRWOMAN, *THE MYSTERY OF EDWIN DROOD*  
 THE CONNECTICUT HIGH SCHOOL MUSIC THEATRE AWARDS  
 NORWICH, CT  
 NEW CANAAN HIGH SCHOOL




**CHRISTIAN PARIS**  
 FRED GRAHAM/PETRUCHIO, *KISS ME, KATE*  
 RISING STAR AWARDS  
 MILLBURN, NJ  
 GILL ST. BERNARD'S SCHOOL



**ALEXANDRIA PAYNE**  
 TI MOUNE, *ONCE ON THIS ISLAND*  
 SHULER HENSLEY AWARDS FOR EXCELLENCE  
 ATLANTA, GA  
 TRI-CITIES HIGH SCHOOL



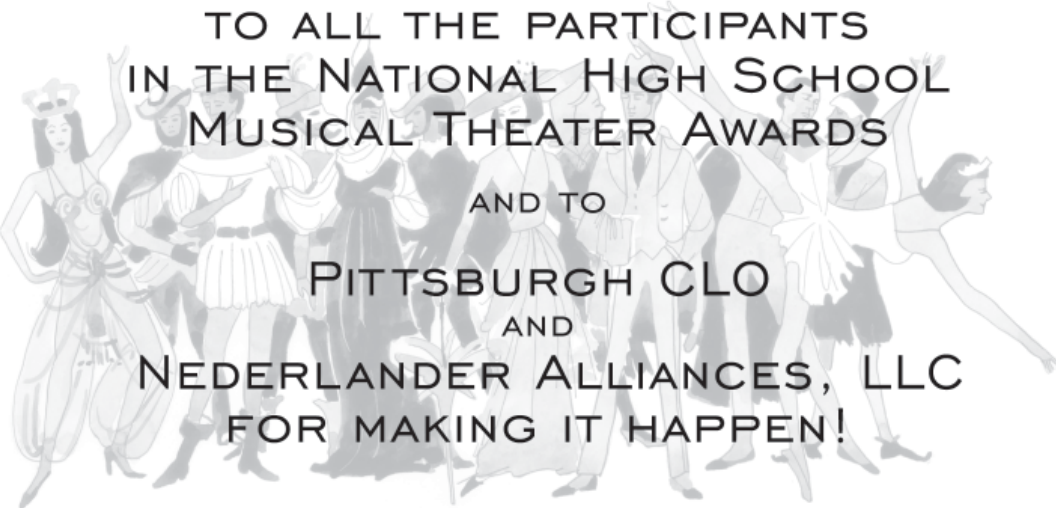
**CHELSEA REED**  
 MOTHER, *RAGTIME*  
 THE FREDDY AWARDS  
 EASTON, PA  
 EASTON AREA HIGH SCHOOL


**CONGRATULATES ALL OF THE**  
**2010**  
**JIMMY AWARD**  
**NOMINEES AND WINNERS!**

For more information about producing a Disney musical at your school, visit [DisneyMUSICALS.com](http://DisneyMUSICALS.com)

©Disney

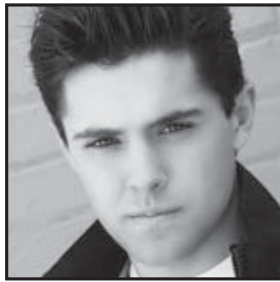
**CONGRATULATIONS!**  
 TO ALL THE PARTICIPANTS  
 IN THE NATIONAL HIGH SCHOOL  
 MUSICAL THEATER AWARDS  
 AND TO  
 PITTSBURGH CLO  
 AND  
 NEDERLANDER ALLIANCES, LLC  
 FOR MAKING IT HAPPEN!  
**TAMS-WITMARK MUSIC LIBRARY, INC.**  
 560 LEXINGTON AVENUE, NEW YORK, NY 10022  
 212-688-2525 • FAX 212-688-3232 • [WWW.TAMSWITMARK.COM](http://WWW.TAMSWITMARK.COM)



# 2010 Jimmy Award Nominees



**EMILY ROWAN**  
MEG MARCH, *LITTLE WOMEN*  
FOOTLIGHTERS SCHOLARSHIP  
AWARDS  
LONG BEACH, CA  
ORANGE COUNTY HIGH  
SCHOOL OF THE ARTS



**COOPER ROWE**  
REN, *FOOTLOOSE*  
THE JESTER AWARDS  
WICHITA, KS  
WICHITA COLLEGIATE SCHOOL



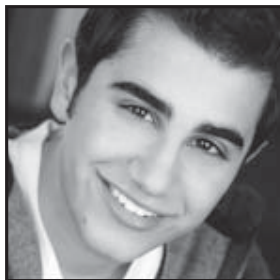
**KATIE SAPPER**  
AUDREY, *LITTLE SHOP OF HORRORS*  
GLOBE HONORS  
SAN DIEGO, CA  
ACADEMY OF  
OUR LADY OF PEACE



**SARAH SCHULTZ**  
JO MARCH, *LITTLE WOMEN*  
JOHN RAITT AWARDS FOR YOUTH  
FULLERTON, CA  
EL DORADO HIGH SCHOOL



**KYLE SELIG**  
DON LOCKWOOD,  
*SINGIN' IN THE RAIN*  
FOOTLIGHTERS SCHOLARSHIP  
AWARDS  
LONG BEACH, CA  
HUNTINGTON BEACH HIGH SCHOOL



**JOSH SKURNIK**  
PIPPIN, *PIPPIN*  
METROPOLITAN HIGH SCHOOL  
THEATRE AWARDS  
NEW CITY, NY  
NORTHERN VALLEY REGIONAL  
HIGH SCHOOL AT DEMAREST



**STEPHANIE STYLES**  
JANET VAN DE GRAAFF,  
*THE DROWSY CHAPERONE*  
TOMMY TUNE AWARDS  
HOUSTON, TX  
EPISCOPAL HIGH SCHOOL



**JORDAN SWINKUNAS**  
CHARLIE BROWN,  
*YOU'RE A GOOD MAN,  
CHARLIE BROWN*  
EXCELLENCE AWARDS  
CHARLOTTE, MI  
HASTINGS HIGH SCHOOL



**ALEXIS TARVER**  
BELLE, *BEAUTY AND THE BEAST*  
HIGH SCHOOL MUSICAL  
THEATRE AWARDS  
MEMPHIS, TN  
BRIARCREST CHRISTIAN SCHOOL



**ELISE VANNEERSON**  
FLORENCE VASSEY, *CHESS*  
MACY AWARDS  
YORBA LINDA, CA  
ORANGE COUNTY HIGH  
SCHOOL OF THE ARTS



**ANDREA WEINZIERL**  
MAME, *MAME*  
GENE KELLY AWARDS  
PITTSBURGH, PA  
AVONWORTH HIGH SCHOOL



**ZACK ZUMBEK**  
SID SOROKIN, *THE PAJAMA GAME*  
JOHN RAITT AWARDS FOR YOUTH  
FULLERTON, CA  
LUTHERAN HIGH SCHOOL OF  
ORANGE COUNTY

## CHAPERONES

Kristina Andrews, Norma Burks, Glenn Campbell, Geneva Cisneros, Tyler Forrest, Linda Glosser, Janet Grove, Gretchen Hill, Rob Kennedy, Mark Kent, Amy Jo Kinyon, Frank Kutch, Nancy Marino, Kim Montelibano Heil, Tim Nelson, Shelby Patterson, Amy Reinert, Bill Rowe, Karen Rymar, Terry Sohn, Mariella Trosko, Jim Usher

Tisch School of the Arts  
Department of Drama,  
Undergraduate at

**New Studio on  
Broadway: Music  
Theatre and Acting**



**NEW YORK UNIVERSITY**

**PROUD SUPPORTER OF THE JIMMY AWARDS**

The bold, new professional training studio specializing  
in music, dance, and acting on Broadway.

**GLOBAL. DIVERSE. FRESH and FAMILIAR.**

For more information, contact:

[http://drama.tisch.nyu.edu/object/dr\\_newstudio](http://drama.tisch.nyu.edu/object/dr_newstudio)  
or 212.998.1850

Mary Schmidt Campbell, Dean  
NYU Tisch School of the Arts

Kent Gash, Director  
New Studio on Broadway:  
Music Theatre and Acting

Elizabeth Bradley, Chair  
Department of Drama,  
Undergraduate

NHS MUSICAL THEATER AWARDS, LLC

**BOARD OF DIRECTORS**

Van Kaplan                      James L. Nederlander                      Nick Scandalios  
Susan Lee                      Joseph C. Guyaux

**PITTSBURGH CLO FOR NHSMTA**

President, NHSMTA . . . . . Van Kaplan  
Project Director . . . . . Kiesha LaLama-White  
Musical Director and Arranger . . . . . Michael Moricz  
Creative Consultant . . . . . Mary Jane Brennan  
Special Projects . . . . . R. James Mercer  
Marketing . . . . . Cindy Opatick  
Development . . . . . Wynne Fedele  
Technical Director . . . . . John R. Edkins  
Lighting Designer . . . . . Andrew D. Ostrowski  
Sound Designer . . . . . Christopher M. Evans  
Communications . . . . . Kristin Archbold  
Assistant to Executive Producer . . . . . Susanne Sommer  
NHSMTA Intern . . . . . Casey McDermott  
Music Copyist . . . . . David Dabbon

**NEDERLANDER FOR NHSMTA**

Executive Director, NHSMTA . . . . . Susan Lee  
Corporate Relations . . . . . Kathleen Raitt  
Sales & Patron Services . . . . . Brian Harasek  
Administrative Associate . . . . . Christopher Hutton

**NHSMTA**

General Management . . . . . Arianna Knapp, SenovVA, Inc.  
Project Stage Manager . . . . . Alix Claps  
Press Representatives . . . . . The Hartman Group/Michael Hartman, Matt Ross  
Sound Equipment . . . . . Sound Associates, Inc.  
Video Projection Equipment . . . . . SenovVA, Inc.  
Audio Assistant . . . . . Janet Smith, Sound Associates, Inc.  
Video Engineer . . . . . Earl Copp, SenovVA, Inc.  
Moving Light Programmer . . . . . Joe Allegro  
Travel Coordination . . . . . Alan Martin, Show Stoppers Travel  
Documentary Filming . . . . . James Carter, Jessica Moore, Josh Birt, Jaime Meyers - Wrecking Crew Media  
Chaperone Coordinator . . . . . Tony Measley  
Program Provided By . . . . . Playbill, Inc.  
Legal . . . . . Thomas R. Distler, Brooks and Distler, Amy C. Opp, Donovan & Yee, LLP  
Accountant . . . . . Robert Fried, Fried & Kowgios CPA's, LLP  
Banking . . . . . PNC  
Website Development . . . . . Lava New Media  
Award Production . . . . . Newton Manufacturing Company

**CAMP BROADWAY FOR NHSMTA**

NYU Liason/Music Coordinator . . . . . Rob Hartmann  
Project Management . . . . . Jessica Francis, Scott Praefke  
Communications . . . . . Sarah Hutton  
Host Staff . . . . . Amy Burgess, Gena Oppenheim, Kevin Michael Murphy  
Production Coordinator . . . . . Maggie-Kate Coleman  
Interns . . . . . Chris Ramirez, Valeria Pepe (Repertory Company High School for Theatre Arts),  
Kaily Alberghini (Hanover High School)

**NYU TISCH SCHOOL OF THE ARTS**

Dean, NYU Tisch School of the Arts . . . . . Mary Schmidt Campbell  
Chair, Department of Drama, Undergraduate . . . . . Elizabeth Bradley  
Director, New Studio on Broadway: Music Theatre and Acting . . . . . Kent Gash  
Director of Production, Department of Drama, Undergraduate . . . . . Chris Jaehnig  
Director of Recruitment, NYU Tisch School of the Arts . . . . . Patricia Decker  
Assistant Director for External Affairs . . . . . Anne Palermo  
Assistant to Chair, Department of Drama, Undergraduate . . . . . Aimee Epstein  
Scene Shop Supervisor, Department of Drama, Undergraduate . . . . . Carlton Ward

**FACULTY COACHES**

Head of Vocal Music, New Studio on Broadway: Music Theatre and Acting . . . . . Michael McElroy,  
Jonathan Bernstein, Michelle Tattenbaum

We salute  
**The Jimmy Awards**

Bravo to the participants in this year's  
National High School Musical Theater Awards.  
Congratulations on making your Broadway debut!

and their founder  
**James M. Nederlander**  
*Recipient of the 2010  
Schoenfeld Vision for Arts in Education Award  
A "Role Model" to the  
entire Broadway community.*





**CONGRATULATIONS**

**NATIONAL HIGH SCHOOL  
MUSICAL THEATER AWARD  
WINNERS**

**Now that you've made it here,  
You'll make it anywhere,  
It's up to you!!**



**N E D E R L A N D E R  
P R O D U C I N G C O M P A N Y  
O F A M E R I C A, I N C.**

**JAMES M. NEDERLANDER**    **JAMES L. NEDERLANDER**  
CHAIRMAN                                  PRESIDENT

**NICK SCANDALIOS**  
EXECUTIVE VICE PRESIDENT

*Jimmy,*

*Your Life in the Theater  
Has Inspired So Many.*

*Bravo,*

*Van Kaplan &  
Pittsburgh CLO*

 Pittsburgh  
**CLO**  
CELEBRATING MUSICAL THEATER

## DONORS

---

### The Broadway League

#### PALACE

Nederlander Alliances, LLC  
National Endowment for the Arts  
Pittsburgh CLO  
The Shubert Organization, Inc.

#### PANTAGES

Disney Theatrical Productions  
Tams-Witmark Music Library, Inc.

#### ALDWYCH

Barry & Fran Weissler

#### ORIENTAL

Broadway in Chicago  
I.A.T.S.E.  
Music Theater International  
Samuel French, Inc.  
Stop Pest Control of NY  
The Orpheum Theatre  
The Rodgers & Hammerstein Organization  
Treasurers & Ticket Sellers Union Local 751

#### GREEK

Charlotte Wilcox Company L.L.C  
Albert Nocciolino - NAC Entertainment  
Paul & Colleen Hennigan

#### FISHER

Robert Fried & Karen Kowglos, Fried & Kowglos CPAs LLP  
Leonard Soloway  
Evelyn Mack Truitt  
Franklin Weissberg  
Zwick Maddox & Banyai, PLLC

all THE WORLD IS  
YOUR STAGE,  
SING YOUR HEART OUT!



*Camp Broadway*  
www.campbroadway.com

### SPECIAL THANKS

- Big Taxi Tours
- Phillip Birsh and Alex Near, Playbill, Inc.
  - Bully's Deli
- *Come Fly Away* – David Calhoun, Jeanne Koenig, Heidi Neven
  - Thomas R. Distler, Brooks & Distler
- Robert Fried & Karen Kowglos, Fried & Kowglos CPAs LLP
- Louise Kerz Hirschfeld and David Leopold – The Al Hirschfeld Foundation
  - Tom Kitt and Green Day
- Michael McKenna, Sandbar Concessions
  - *Memphis*
- NYU Tisch School of the Arts
- Stuart Oken & Andrew Lipa - *The Addams Family*
  - Sound Crew – Dillon Cody, Jason Strangfeld
    - Spotlight Costumes
- Jan Thomas, Hicks Heim Mustio Insurance
  - Ticketmaster
- Carlton Ward – NYU Tisch School of the Arts